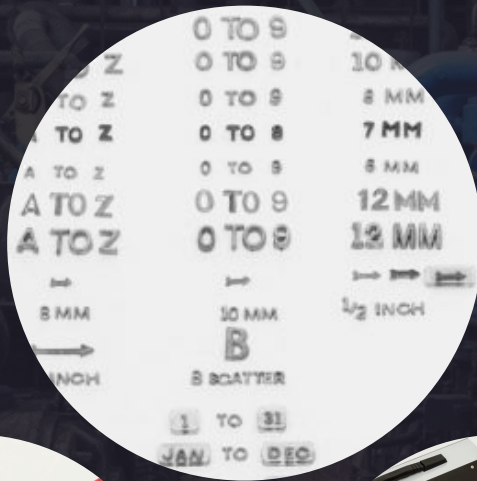


# RADIOGRAPHY TESTING ACCESSORIES



**SVK Electronics**  
NDT Systems & Solutions



[info@svkelectronics.com](mailto:info@svkelectronics.com)



[www.svkelectronics.com](http://www.svkelectronics.com)



## LEAD SCREEN

We market Lead Screens by one of the most renowned brand RADAC manufactured in The United Kingdom. Radac screens are protected with a Peel-Off Plastic Film the ensures that they reach the customer in perfect condition. The Photographic –Quality Base-Card which forms the support is defect-free, strong & flexible.

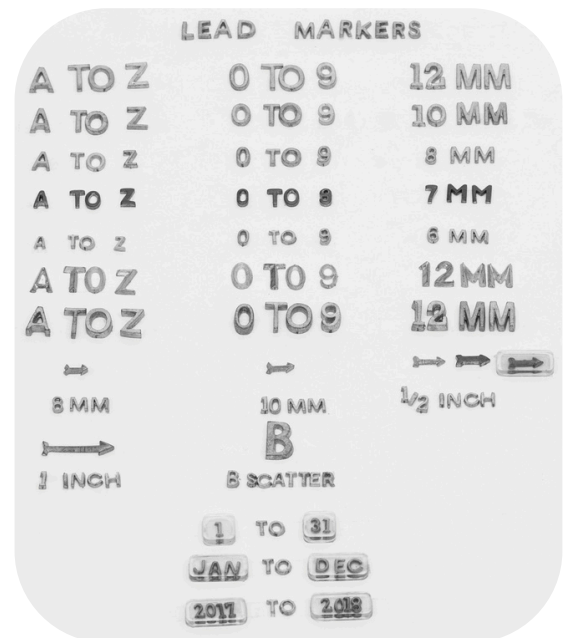
The Screen can be bent over & over again to a small radius, without Cracking!

## LEAD MARKER

Lead Markers is a Radiography Testing Tool used for Identification (Job no., Segment & Company name.), Direction, & Date on Films during exposure. They can be manufactured with either Pure Lead or Mixed Lead.

### Available In:

*Lead Letter A to Z, Lead Number 0 to 9, Lead Arrows 4 types, B for Back Scatter, Date, Month & year set available, in plastic pack also available.*



## LEAD MARKER TAPE

Lead Marker Tape is a Radiography Testing Tool used in jobs like pipe vessels & it can also be used when it is difficult to apply lead characters on objects.

### Available In:

*Various Metric Systems like meter/foot with the spacing of 1"/2"/1cm/2cm/5cm and 10cm*



## COLLIMATOR

A Collimator is a device that narrows a beam of particles. To “Narrow” can mean either to cause the directions of motion to become more aligned in a specific direction or to cause the spatial cross section of the beam to become smaller.

### Available In:

*We manufacture and supply Panoramic / Directional type of collimators in either Lead or Tungsten for different types of projectors.*

## LEAD MARKER

PVC stands for PolyVinyl Chloride, a material used to make cassettes to hold film during exposure. We manufacture PVC Cassettes in various sizes as per customer requirement in Velcro / Inner Outer types. They are used to keep film in it, so that the film is not damaged or exposed due to light.



## CEE VEE TONG

Cee Vee Tong is used for handling Isotopes, & pigtails. If during radiography, due to an accident if the radiation source or the pigtail carrying it falls out of the camera, a cee vee tong is used to pick the same from at a distance to ensure safety for the personnel.

### Available In:

*Lengths of 1 mtr, 1.5mtrs, & 2mtrs .*



## RADIATION WARNING SIGN BOARD

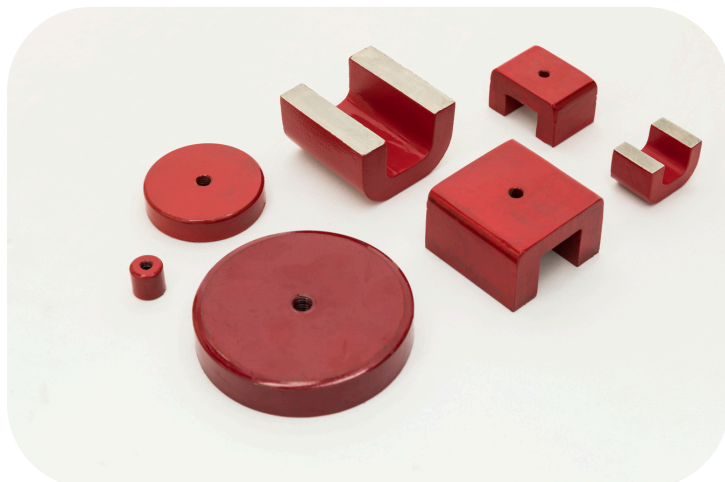
Radiation Warning Sign Boards are used to intimate, notify the personnel around that radiography work is being carried out and please be at a safe distance.

### Available In:

*We manufacture sign boards in various types like flag type, stickers, and barrier tape. They can be manufactured in various languages like English & Arabic*

## HANGERS

- Hangers are used to hold films while developing & drying of films.
- We manufacture and supply hangers in SS 304 & SS 316.
- Also, they can be manufactured in Channel Type and Clip Type of various sizes



## MAGNETS

We supply magnets to hold film and guide tubes during radiography. We can supply magnets in the Assembled and Full Magnets. They can be in U Shape and Round Shape of various sizes.



## IMAGE QUALITY INDICATORS

Image Quality Indicators (IQIs), referred to as Penetrameter, provide a means of visually interpreting the contrast sensitivity and definition Radiography Testing.

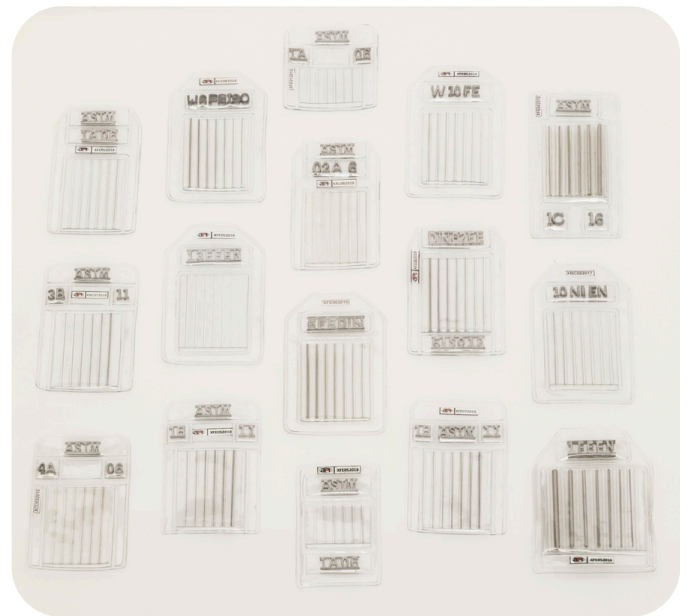
The IQI indicates that a specified amount of change in material thickness will be detectable in the radiograph and that the radiograph has a certain level of definition so that the density changes are not lost due to un-sharpness.

### IQI : WIRE TYPE

There are 2 kinds of IQIs. The first kind is Wire type. We manufacture & supply wire type IQI confirming to ASTM, DIN, EN & ISO Standards

#### Available In:

*Materials like Steel, Aluminum, Copper, Titanium, etc.*



### IQI : HOLE TYPE

We manufacture and supply Hole Type IQI confirming to ASTM & EN Standards.

#### Available In:

*Steel, Incoal, Aluminum, Copper, etc*

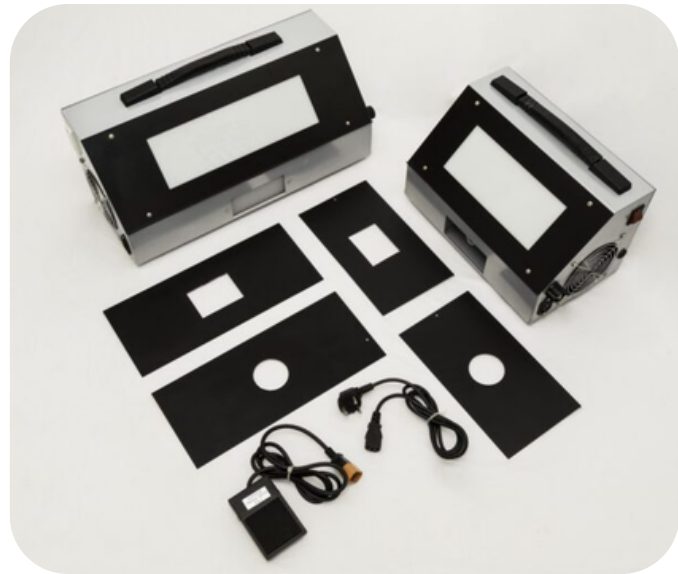


## FILM VIEWER

Film Viewers also known as Illuminators are used to view, interpret and analyze high-density films. Due to the high density it is not possible for the interpreter to view the films with normal light source.

### Available In:

*We Manufacture and Supply Viewers in 3 different light source of various sizes : Halogen, CFL & LED*



## DEVELOPING ACCESSORIES

Tanks are used while developing and fixing of films to hold the chemicals and water. We manufacture tanks in SS and fiber material.

**Available In:** 2, 3, 5 & 10 gallons.

A Chemical Mixer Rod is used to mix the chemicals to form a uniform solution without Crystals, Safe light is used in dark rooms for viewing films in the dark. If normal light is used, films will get exposed.



SAFE LIGHT



DARK ROOM METER



CHEMICAL MIXER ROD



SS DEVELOPING TANK



## RADIATION MONITORING



BLINKER



SURVEY METER



POCKET DOSIMETER